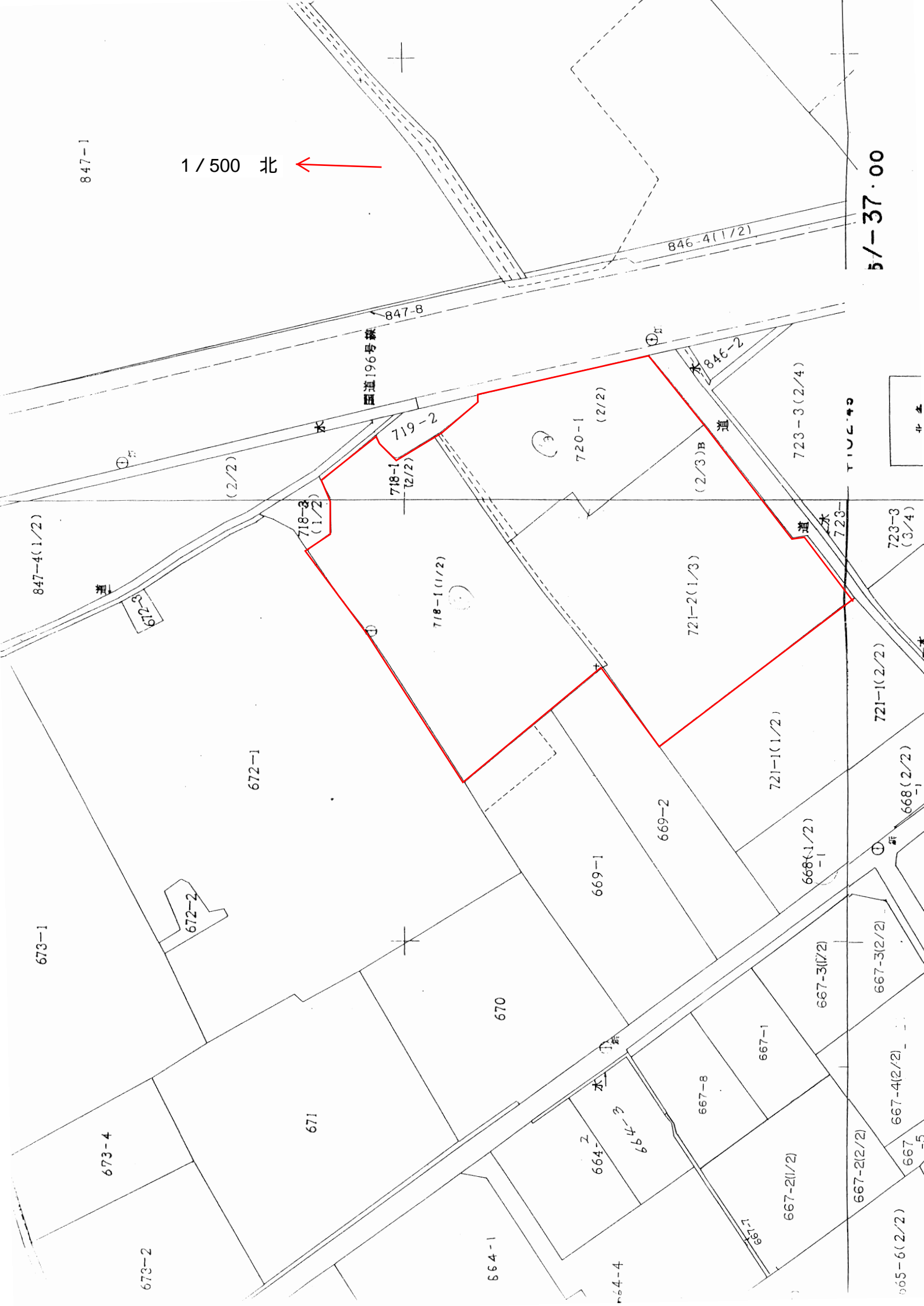


847-1

1/500 北



5/-37.00



国道196号線

846-4(1/2)

847-8

846-2

(2/2)

719-2

720-1 (2/2)

723-3 (2/4)

718-3 (1/2)

718-1 (2/2)

(2/3)B

847-4(1/2)

672-3

718-1 (1/2)

721-2(1/3)

723-3 (3/4)

672-1

721-1(1/2)

721-1(2/2)

673-1

672-2

669-1

669-2

668-1(1/2)

668(2/2)

673-4

671

670

667-1

667-8

667-1

667-3(1/2)

667-3(2/2)

673-2

664-1

664-2

664-3

664-4

667-2(1/2)

667-2(2/2)

665-6(2/2)

667-4(2/2)

667-5